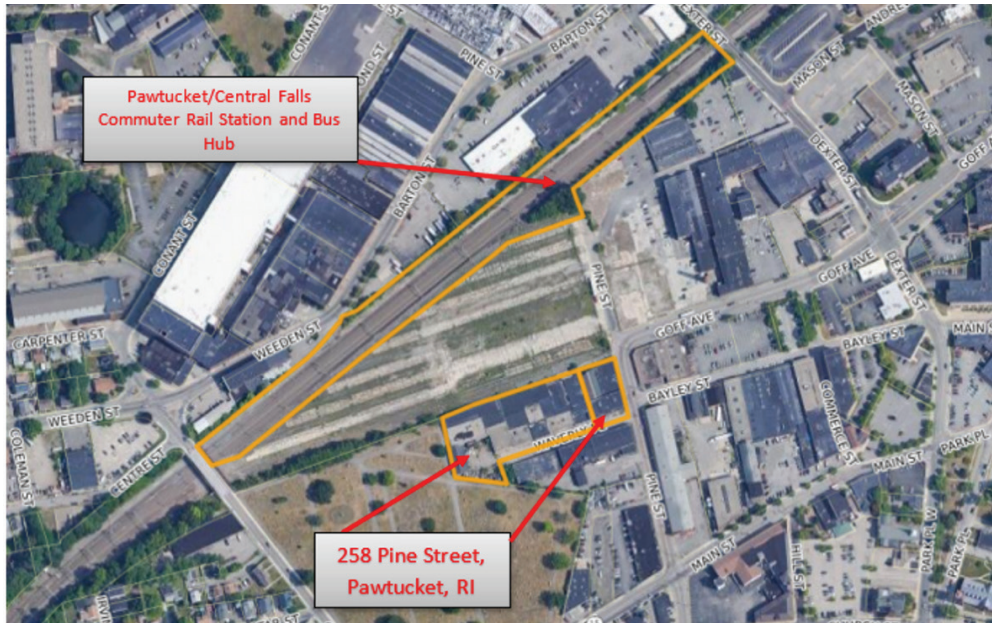


Immediately available for sale by Special Master,

JOHN A. DORSEY, ESQ.

An opportunity to acquire and Redevelop the land located at
258 Pine Street, Pawtucket, Rhode Island



**The Special Master has received an offer of \$700,000.00,
subject to higher or better offers and Court approval.**

- The property consists of approx. 2.23 acres of land (the “Real Estate”).
- The Real Estate is situated in immediate proximity to the forthcoming Pawtucket-Central Falls Commuter Rail Station.
- The Real Estate is conveniently located within a short distance from Interstate I-95.
- The Real Estate is located within the Conant Thread Zoning District, which allows for a wide range of development opportunities, including but not limited to multi-family residential, mixed-use, retail, commercial, office, recreation, live-work, and light manufacturing.
- The Mastership has the flexibility to consider competing offers that include redevelopment contingencies (i.e. permits, approvals, tax abatement or stabilization, etc.).

Comprehensive bid package materials are available at www.frlawri.com

A sale hearing is scheduled for September 20, 2022, at 10:00 a.m. before the Providence County Superior Court Business Calendar. Any party may attend the sale hearing and present higher or better competing offers. Any competing offers must be accompanied by a five percent (5%) deposit.

FOR FURTHER INFORMATION OR TO SUBMIT A COMPETING BID PLEASE CONTACT:
John A. Dorsey, Esq., Special Master



BUSINESS LITIGATION
RECEIVERSHIP
PROJECT DEVELOPMENT

FERRUCCI RUSSO DORSEY PC

55 PINE STREET • PROVIDENCE, RI 02903

(T) 401.455.1000

Email: jdorsey@frlawri.com